



Couvrette's First Lane Surround is a three-sided enclosure designed to simplify the installation or retrofit of a drive-up ATM through an existing wall. This allows the customer to convert from a pneumatic tube system or teller window to a drive-up ATM without the expense of on-site construction for a building extension. The First Lane Surround is custom engineered to fit any opening size, allowing banks who are moving to remote teller systems to replace the teller window and deal drawer with a drive ATM installation. Couvrette supports any customer paint color and provides marketing and branding graphics to suit any installation.

Dedicated to quality, Couvrette offers complete turnkey service and provides solutions for site planning, site construction, design, manufacturing, delivery, installation, service, and maintenance.

Benefits

Reduces cost by avoiding construction or building-extension costs.

Enclosure is built to fit site requirements, providing quicker installation.

Variable return allows proper ATM positioning with the existing curb setback.

Through-the-wall installations allow ATM servicing inside the bank.

Optional backlit signcan and custom graphics increase visibility and promote corporate identity.

AB244 compliant down lighting increases safety for the ATM customer and service personnel.

Complete support from site planning to delivery, installation, and service.

Product Options

18" Signcan with 7" Overhang

Down Lighting and Backlighting

Radius Corners

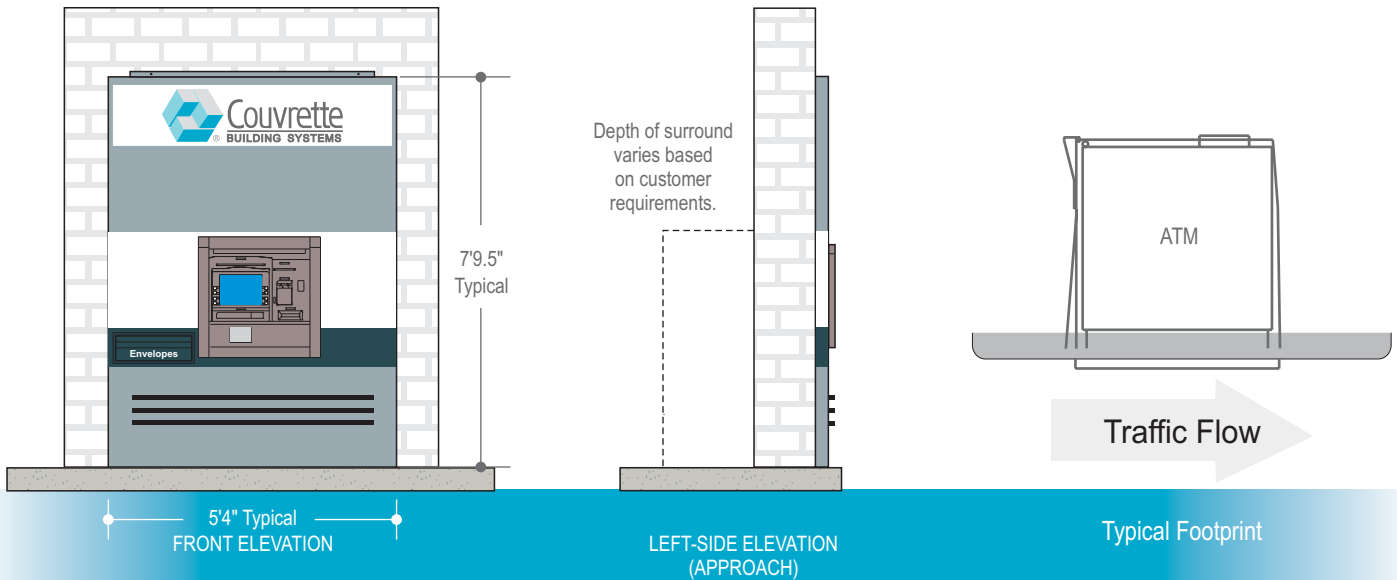
Bumper Guards (Black Standard)

Envelope Dispenser, Waste Receptacle, and After Hours Depository

Network/Marketing Panels

Turnkey Service from Concept to Completion

First Lane Surround



First Lane Surround with POS Panel



First Lane Surround with Backlit Signcan



First Lane Surround with Backlit Signcan

ATMs shown are for illustrative purposes. See Couvrette's ATM Cross-reference Guide for a complete listing of all ATM models compatible with this product.

Turnkey Service from Concept to Completion

Headquarters
565 Electric Road • Salem, VA 24153
TEL (540) 375-2608 • FAX (540) 375-2638
March 15, 2006 Revision 8.0

EMAIL products@couvrette.com
WEB www.couvrette.com

California Office
8665 Argent St., Ste. D • Santee, CA 92071
TEL (619) 938-8000 • FAX (619) 938-8001